

ISSUE HISTORY	
MARK	DESCRIPTION
1/6/05	ISSUED FOR PERMIT
6/4/05	REVISION PER ROBERT LORING
△	
△	
△	

ROOF AND FLOOR PLAN NOTES

1. TENANT PROVIDED BOTTLED WATER LOCATION
2. CONTRACTOR TO COORDINATE W/ OWNER REGARDING ADDITIONAL SFPOR IN WALL 45 REQUIRED BY EQUIPMENT
3. ACCESS HATCH TO AIR CONDITIONING EQUIPMENT AT LC SPACE
4. VENT STACK - SEE PUMPING
5. 4"x6" PREFINISHED ALUMINUM DOWNSPOUT
6. REMOVE AND INSTALL WALL HANG HALL 11" PURPOSE MOUNTING BRACKETS UL RATED
7. TENANT SEPARATION WALLS, GENERAL CONTRACTOR TO COORDINATE LOCATIONS W/ OWNER PRIOR TO INSTALLATION
8. PROVIDE CONCRETE SFP ASHBOCKS AT ALL DOWNSPOUT LOCATIONS (EXCEPT WHERE DOWNSPOUTS ARE CONNECTED TO BELOW GRADE DRAINAGE). CONTRACTOR TO FIELD VERIFY DOWNSPOUT LOCATIONS.
9. GRAVEL DRAINAGE ARE A ALONG BUILDING PERIMETER - REFER TO DETAIL 19A/B/0

WALL LEGEND

- 3.5/8" GALV. STEEL STUD & 1/2" O.C. 1-1/8" TENANT SEPARATION WALL (BASIS OF DESIGN UL 445)
- LOCATIONS 9) TO BE COORDINATED BY GENERAL CONTRACTOR W/ OWNER AND ARCHITECT PRIOR TO INSTALLATION
- 8" CHU WALL, REFER TO STRUCTURAL REINFORCEMENT
- Gypsum wall board partition
- FUTURE TENANT PARTITIONS (N.I.C.)

Vaughn D. Holman, AIA, Pres.
 AR0010215
 For
 HOLMAN SHAW ARCHITECTS, INC.
 AA C001389

IT IS THE RESPONSIBILITY OF THE CONTRACTORS TO REVIEW THE COMPLETE ARCHITECTURAL AND SUPPLYING ALL MATERIALS AND PRODUCTS WHICH ARE SPECIFIC PART OF THEIR TRADE. CONTRACTORS SHALL NOT BID FROM PARTIAL SETS.

THOMPSCO BUILDING

112 SE CANOVA STREET
 PALM BAY, FL 32909

ARCHITECTURE INTERIOR DESIGN PLANNING

2101 S. W. 16th Avenue, Suite 100, West Palm Beach, Florida 33411

PHONE 321-782-3897

FLOOR PLAN AND ROOF PLAN

DATE: 05/07/05
 DRAWN BY: AK
 CHECKED BY: TW
 PROJECT NO: 04068

COPYRIGHT © STATEMENT
 THESE DOCUMENTS AND THEIR CONTENTS ARE THE PROPERTY OF HOLMAN SHAW ARCHITECTS, INC. (HSA) AND ARE TO BE USED ONLY FOR THE PROJECT AND SITE SPECIFICALLY IDENTIFIED HEREIN. ANY REPRODUCTION OR MODIFICATION OF THESE DOCUMENTS WITHOUT THE EXPRESS WRITTEN CONSENT OF HSA IS PROHIBITED BY LAW.

LIFE SAFETY	
APPLICABLE CODES	FLORIDA (FBC) 2001, FLORIDA PLUMBING CODE 2001, FLORIDA MECHANICAL CODE 2001, FLORIDA GAS CODE 2001, FLORIDA FIRE PREVENTION CODE 2001, NEC 1993, NFPA 101 2000
OCCUPANCY CLASSIFICATION	(FBC 2001, SECTION 309.1.2) TYPE 'B' - BUSINESS OCCUPANCY
CONSTRUCTION TYPE	(FBC 2001, SECTION 607) TYPE 'V' - UNPROTECTED UNSPRINKLERED
AREA UNDER LIMITATIONS	(FBC 2001, TABLE 906) AREA UNDER LIMITATIONS: 4,500 GSF ACTUAL: 4,200 GSF
OCCUPANT LOAD	(FBC 2001, TABLE 0903.1) TYPE 'B' OCCUPANCY (4,500 GSF / 100 GSF PER PERSON): 45 PERSONS
TRAFFIC DISTANCE	(FBC 2001, TABLE 1004) MAXIMUM TRAVEL DISTANCE: 100 FT. MAXIMUM DEAD END CORRIDOR: 20 FT. EGRESS WIDTH REQUIRED: 37' MINIMUM CORRIDOR WIDTH: 44'
DESIGN LOAD INFORMATION	REFER TO STRUCTURAL

INTERIOR FINISH KEY

ROOM NUMBER	ROOM NAME	FLOOR FINISH	CEILING FINISH	WALL FINISH	BASE MATERIAL	CEILING HEIGHT
01	RECEPTION	FL	CE	W	BM	9'-0"
02	OFFICE	FL	CE	W	BM	9'-0"
03	CONFERENCE	FL	CE	W	BM	9'-0"
04	RESTROOM	FL	CE	W	BM	9'-0"
05	STORAGE	FL	CE	W	BM	9'-0"
06	MECHANICAL	FL	CE	W	BM	9'-0"
07	UTILITY	FL	CE	W	BM	9'-0"
08	STAIR	FL	CE	W	BM	9'-0"
09	ELEVATOR	FL	CE	W	BM	9'-0"
10	MECHANICAL	FL	CE	W	BM	9'-0"
11	MECHANICAL	FL	CE	W	BM	9'-0"
12	MECHANICAL	FL	CE	W	BM	9'-0"
13	MECHANICAL	FL	CE	W	BM	9'-0"
14	MECHANICAL	FL	CE	W	BM	9'-0"
15	MECHANICAL	FL	CE	W	BM	9'-0"
16	MECHANICAL	FL	CE	W	BM	9'-0"
17	MECHANICAL	FL	CE	W	BM	9'-0"
18	MECHANICAL	FL	CE	W	BM	9'-0"
19	MECHANICAL	FL	CE	W	BM	9'-0"
20	MECHANICAL	FL	CE	W	BM	9'-0"
21	MECHANICAL	FL	CE	W	BM	9'-0"
22	MECHANICAL	FL	CE	W	BM	9'-0"
23	MECHANICAL	FL	CE	W	BM	9'-0"
24	MECHANICAL	FL	CE	W	BM	9'-0"
25	MECHANICAL	FL	CE	W	BM	9'-0"
26	MECHANICAL	FL	CE	W	BM	9'-0"
27	MECHANICAL	FL	CE	W	BM	9'-0"
28	MECHANICAL	FL	CE	W	BM	9'-0"
29	MECHANICAL	FL	CE	W	BM	9'-0"
30	MECHANICAL	FL	CE	W	BM	9'-0"
31	MECHANICAL	FL	CE	W	BM	9'-0"
32	MECHANICAL	FL	CE	W	BM	9'-0"
33	MECHANICAL	FL	CE	W	BM	9'-0"
34	MECHANICAL	FL	CE	W	BM	9'-0"
35	MECHANICAL	FL	CE	W	BM	9'-0"
36	MECHANICAL	FL	CE	W	BM	9'-0"
37	MECHANICAL	FL	CE	W	BM	9'-0"
38	MECHANICAL	FL	CE	W	BM	9'-0"
39	MECHANICAL	FL	CE	W	BM	9'-0"
40	MECHANICAL	FL	CE	W	BM	9'-0"
41	MECHANICAL	FL	CE	W	BM	9'-0"
42	MECHANICAL	FL	CE	W	BM	9'-0"
43	MECHANICAL	FL	CE	W	BM	9'-0"
44	MECHANICAL	FL	CE	W	BM	9'-0"
45	MECHANICAL	FL	CE	W	BM	9'-0"
46	MECHANICAL	FL	CE	W	BM	9'-0"
47	MECHANICAL	FL	CE	W	BM	9'-0"
48	MECHANICAL	FL	CE	W	BM	9'-0"
49	MECHANICAL	FL	CE	W	BM	9'-0"
50	MECHANICAL	FL	CE	W	BM	9'-0"

NOTE: ALL INTERIOR FINISHES SHALL COMPLY WITH THE FLORIDA BUILDING CODE (FBC) 2001, CHAPTER 8 AND NFPA 101, 2000.
 PROVIDE A TENSILE STRIP WHERE THERE IS A CHANGE IN FLOOR FINISH.

CHEMICAL SOILS TREATMENT

THE CHEMICAL BARBERS METHOD SHALL BE COMPLETED IN ACCORDANCE WITH THE FLORIDA BUILDING CODE SECTIONS 041/0501/06/2203. A CERTIFICATE OF COMPLIANCE MUST BE SUBMITTED TO THE BUILDING DEPARTMENT BY A LICENSED PEST CONTROL COMPANY BEFORE A CERTIFICATE OF OCCUPANCY WILL BE ISSUED. THE BUILDING HAS RECEIVED A COMPLETE TREATMENT FOR THE PREVENTION OF SUBVERSIVE ANTIMONY. THE TREATMENT IS IN ACCORDANCE WITH THE RULES & LAWS OF THE FLORIDA DEPARTMENT OF AGRICULTURE AND CONSUMER SERVICES.

PAINT SPECIFICATION BASIS OF DESIGN: SHERWIN WILLIAMS

NOTE: COORDINATE COLOR SELECTION WITH OWNER AND ARCHITECT

INTERIOR PAINTS

- Gypsum wall board (TYPICAL)
- EG-SHELF FINISH
- 1ST COAT: 5-WU PREPARED 200 INTERIOR LATEX WALL PRIMER
- 2ND COAT: 5-WU PROXAR 200 INTERIOR LATEX EG-SHELF B310000
- 3RD COAT: 5-WU PROXAR 200 INTERIOR LATEX EG-SHELF B310000 (4 MILS WET, 1.5 MILS DRY PER COAT)
- GYP/WALL BOARD (TOILET ROOMS)
- 1ST COAT: 5-WU PREPARED 200 INTERIOR LATEX WALL PRIMER
- 2ND COAT: 5-WU PROXAR 200 INTERIOR LATEX EG-SHELF B310000
- 3RD COAT: 5-WU PROXAR 200 INTERIOR LATEX EG-SHELF B310000 (4 MILS WET, 1.5 MILS DRY PER COAT)
- GYP/WALL BOARD (CEILING)
- 1ST COAT: 5-WU PREPARED 200 INTERIOR LATEX WALL PRIMER
- 2ND COAT: 5-WU PROXAR 200 INTERIOR LATEX EG-SHELF B310000 (4 MILS WET, 1.5 MILS DRY)

METAL INTERIOR - HOLLOW METAL DOOR & FRAMES

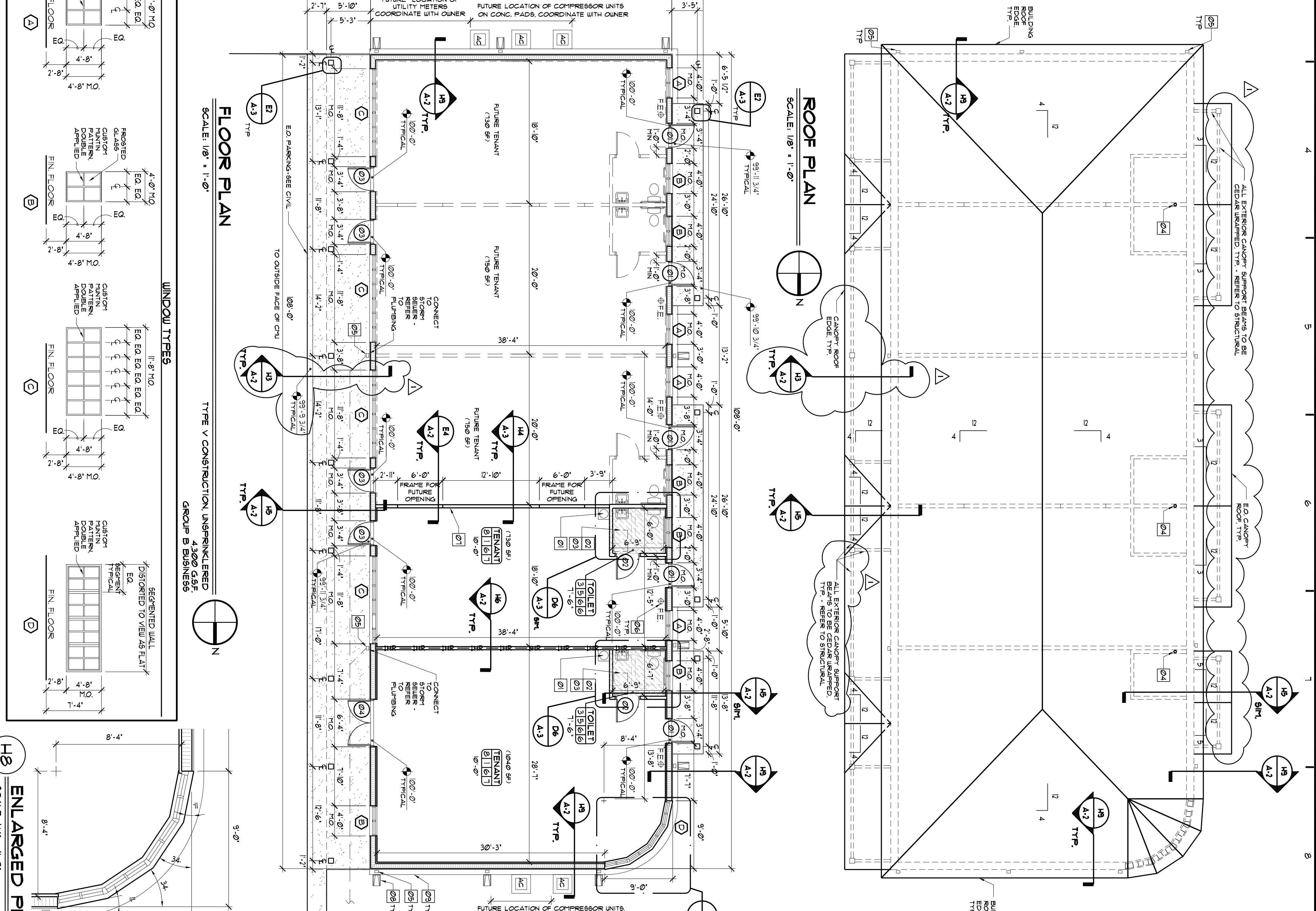
- SEMI-GLOSS FINISH
- 1ST COAT: 5-WU KEMPROK UNIVERSAL METAL PRIMER B502 SERIES (6 MILS WET, 3 MILS DRY)
- 2ND COAT: 5-WU PROCLASSIC WATERBORNE INTERIOR ACRYLIC SEMI-GLOSS FINISH
- 3RD COAT: 5-WU METALBOND DTM ACRYLIC MODIFIED ENAMEL SEMI-GLOSS FINISH (4 MILS WET, 1.5 MILS DRY)

METAL EXTERIOR - HOLLOW METAL DOOR & FRAMES

- SEMI-GLOSS FINISH
- 1ST COAT: 5-WU METALASTIC DTM ACRYLIC MODIFIED ENAMEL SEMI-GLOSS FINISH
- 2ND COAT: 5-WU METALBOND DTM ACRYLIC MODIFIED ENAMEL SEMI-GLOSS FINISH (4 MILS WET, 1.5 MILS DRY)

WOOD FASCIA SIDING (EXTERIOR)

- WOOD FASCIA SIDING (EXTERIOR)
- 1ST COAT: 5-WU A-100 EXTERIOR OIL WOOD PRIMER T741000
- 2ND COAT: 5-WU A-100 EXTERIOR LATEX SATIN A-82 SERIES (4 MILS WET, 1.3 MILS DRY)
- 3RD COAT: 5-WU A-100 EXTERIOR LATEX SATIN A-82 SERIES (4 MILS WET, 1.3 MILS DRY PER COAT)



DOOR SCHEDULE

DOOR TYPE 01
 3'-0" W X 7'-0" H HOLLOW METAL DOOR AND FRAME, PRIMED AND PAINTED WITH THE FOLLOWING:
 ENTRANCE LOCKSET ENTRY/EXIT HARDWARE 1 1/2" PR B2 BUTTS, ENTRANCE CLOSER, ALUMINUM THRESHOLD, WEATHER STRIPPING, PRIVACY LATCH SET, MARBLE THRESHOLD SILENCERS, 1 1/2" PR BUTTS

DOOR TYPE 02
 3'-0" W X 7'-0" H X 1 3/4" SOLID CORE WOOD DOOR (PRIMED AND PAINTED) IN HOLLOW METAL FRAME (PRIMED AND PAINTED) WITH THE FOLLOWING:
 PRIVACY LATCH SET, MARBLE THRESHOLD SILENCERS, 1 1/2" PR BUTTS

DOOR TYPE 03
 IMPACT RESISTANT 3'-0" W X 7'-0" H ALUMINUM (FINISH WHITE) GLASS DOOR WITH MUNTINS, BASIS FOR DESIGN: KALNEER SERIES IR-350 IMPACT RESISTANT.
 PROVIDE THE FOLLOWING: RUSH BAR/RULL HANDLE, T & B PIVOTS, CH CLOSER, CYLINDER LOCK WITH TURNED LATCH, ALUMINUM THRESHOLD, WEATHER STRIPPING

DOOR TYPE 04
 (PAIR) IMPACT RESISTANT 3'-0" W X 7'-0" H ALUMINUM (FINISH WHITE) GLASS DOOR WITH MUNTINS, BASIS FOR DESIGN: KALNEER SERIES IR-350 IMPACT RESISTANT.
 (1) RUSH BAR/RULL HANDLE, T & B PIVOTS, CH CLOSERS, (1) CYLINDER LOCK (ACTIVE LEAF), T & B FLUSH BOLTS (INACTIVE LEAF), MEETING STILES, ALUMINUM THRESHOLD, WEATHER STRIPPING

DOOR NOTES

- DOOR FRAME HARDWARE & INSTALLATION TO BE IN ACCORDANCE WITH MANUFACTURER'S REQUIREMENTS FOR SPECIFIC CASE (WIND SPEEDS, CONTRACTOR TO PROVIDE NOTICE OF PALM BAY BUILDING DEPARTMENT A COPY OF NOTICE OF ACCEPTANCE (NOA) FOR PRODUCTS SELECTED.
- ALL SOLID CORE WOOD DOORS SHALL BE FLUSH CLEAR FINISH STAIN GRADE BIRCH VENEER WITH PAINTED HOLLOW METAL FRAMES. COORDINATE FINISHES WITH TENANT'S DESIGNATED REPRESENTATIVE.
- REFRESH FINISHES SHALL COORDINATE HARDWARE WITH OWNERS DESIGNATED REPRESENTATIVE.
- ALL DOORS SHALL RECEIVE LEVERSETS (UNLESS NOTED OTHERWISE). LEVERS, LOCKS, RELATED HARDWARES SHALL BE COORDINATED WITH TENANT'S DESIGNATED REPRESENTATIVE. DISABILITIES ACT ACCESSIBILITY GUIDELINES AND THE FLORIDA BUILDING CODE (FBC) 2001.
- LOCKING DEVICES ON EXIT DOORS SHALL BE DIRECT ACTING, REQUIRING NO MORE THAN ONE MOTION.
- COORDINATE KEYING WITH OWNER.
- INSIDE OF ALL EXTERIOR HOLLOW METAL DOOR FRAMES AND SPRAYED WITH AUTOMOTIVE SPRAY UNDERCOATING.

WINDOW SCHEDULE

WINDOW TYPE A
 FIXED ALUMINUM W/ DOUBLE APPLIED GRILL AS SHOWN (WHITE) W/ TINTED GLASS
 NOTE: WINDOW ON WEST SIDE OF BUILDING TO BE REFLECTIVE. WINDOW HEAD HEIGHT TO MATCH DOOR FRAMES.

WINDOW TYPE B
 FIXED ALUMINUM W/ DOUBLE APPLIED GRILL AS SHOWN (WHITE) W/ TINTED GLASS
 NOTE: WINDOW HEAD HEIGHT TO MATCH DOOR FRAMES.

WINDOW TYPE C
 FIXED ALUMINUM W/ DOUBLE APPLIED GRILL AS SHOWN (WHITE) W/ TINTED GLASS
 NOTE: WINDOW HEAD HEIGHT TO MATCH DOOR FRAMES.

WINDOW TYPE D
 FIXED ALUMINUM W/ DOUBLE APPLIED GRILL AS SHOWN (WHITE) W/ TINTED GLASS
 NOTE: WINDOW HEAD HEIGHT TO MATCH DOOR FRAMES.

WINDOW NOTES

- BASIS OF DESIGN FOR WINDOW TYPE A, WINDOW TYPE B, WINDOW TYPE C, WINDOW TYPE D: 1. FIBERGLASS IMPACT RESISTANT WINDOWS - SERIES FIBU-01 ALUMINUM FIXED WINDOW WITH CUSTOM MUNTIN CONFIGURATIONS BOTH INSIDE AND OUTSIDE AS SHOWN.
- WINDOWS & INSTALLATION TO BE IN ACCORDANCE WITH ALL MANUFACTURER'S REQUIREMENTS FOR APPLICABLE WIND SPEEDS. CONTRACTOR TO PROVIDE THE CITY OF PALM BAY BUILDING DEPARTMENT A COPY OF NOTICE OF ACCEPTANCE (NOA) FOR PRODUCTS SELECTED.

FLOOR PLAN
 SCALE: 1/8" = 1'-0"

WINDOW TYPES
 TYPE V CONSTRUCTION, UNSPRINKLERED
 GROUP B BUSINESS

ENLARGED PLAN
 SCALE: 1/4" = 1'-0"